



# Pathways Step by Step

## Choosing Your Path

### District 53 Spring 2018

**Heather Turner, DTM, D53 Chief Pathways Guide**  
**Norm Thibodeau, DTM, Pathways Guide/Ambassador**

09/01/18  
Rev 09/19/18

This presentation illustrates steps and navigation through the initial Pathways assessment and choosing your path. The assessment is a set of 26 questions designed to identify your goals and current skill levels. Your answers will be used by Pathways to identify Paths that will be recommended to you. Regardless of the recommendations, you may pick any Path that you want.

# Get Started

You access Pathways through the  
Toastmasters International website  
(<https://www.toastmasters.org>)



WHERE LEADERS ARE MADE

About Pathways Education Membership Leadership Central Resources Magazine Events Shop

### Pathways

Learn more

Access my path through Base Camp

Take the assessment

Go to Base Camp

Choose a path

Pathways accessible to all

Click

# EVERY TOASTMASTER'S JOURNEY STARTS WITH A SINGLE SPEECH

## START YOUR JOURNEY

Is Toastmasters Right for You?

Do you want to become a confident public speaker  
and strong leader? If so, Toastmasters is the place for





WHERE LEADERS ARE MADE

[Login](#) | [Find a Club](#) | [Start a Club](#) | [Contact Us](#)



[FIND A CLUB](#)

[About](#)

[Pathways](#)

[Education](#)

[Membership](#)

[Leadership Central](#)

[Resources](#)

[Magazine](#)

[Events](#)

[Shop](#)

[Home](#) / [Login](#)

## Log In

Username \*

Password \*

[Log In](#)

[Forgot password?](#)

Toastmasters members logging in for the first time please use "Forgot password?"

Don't have an account? [Join a club](#)

You will need to login so that Pathways knows who you are.

If you don't have a TI userID and password yet, see Step by Step Tutorial on setting up your userID.



WHERE LEADERS ARE MADE

FIND A CLUB

About Pathways Education Membership Leadership Central Resources Magazine Events Shop

## Pathways

Learn more

Access my path through Base Camp

Take the assessment

Go to Base Camp

Choose a path

Pathways accessible materials

Click

# EVERY TOASTMASTER'S JOURNEY STARTS WITH A SINGLE SPEECH

## START YOUR JOURNEY

Is Toastmasters Right for You?

Do you want to become a confident public speaker  
and strong leader? If so, Toastmasters is the place for







WHERE LEADERS ARE MADE

Welcome, William

[Logout](#) | [Find a Club](#) | [Start a Club](#) | [Contact Us](#)

[FIND A CLUB](#)

[About](#) | [Pathways](#) | [Education](#) | [Membership](#) | [Leadership Central](#) | [Resources](#) | [Magazine](#) | [Events](#) | [Shop](#)

[Home](#) / [Pathways learning experience](#)

# Where will Pathways take you?

Continue your journey of personal and professional development through Pathways, Toastmasters' new education program! As the foundation of your Toastmasters experience, Pathways is designed to help you build the competencies you need to communicate and lead.

Scroll down to watch the "Welcome to Pathways" video, sample your first project, view the Rollout Schedule and more.

[Access Pathways](#)

[Welcome to Pathways](#)

[Paths and projects](#)

[How Pathways Began](#)

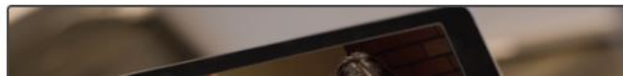
[Rollout Schedule](#)

[Sample Your First Project](#)

[FAQ + More](#)

## Welcome to Pathways

Welcome to the Toastmasters Pathways learning experience, an exciting, flexible and interactive way to develop your skills and help others in your



## | PATHWAYS LEARNING EXPERIENCE

Welcome to Pathways! You'll be challenged and inspired to reach new heights both personally and professionally.

### Choose your path

What are your goals and how will you achieve them? Take the Pathways Assessment to identify the path that best aligns with your interests and objectives.



[Continue to Path Selection](#)

Click

### *The Navigator*

View *The Navigator* to guide you through each step of your journey. Refer to it to support your progress and to answer your questions along the way.

Select Language:

English

[Launch \*The Navigator\*](#)

## | TAKE ASSESSMENT AND CHOOSE YOUR PATH

The first step in Pathways is to take an assessment. This simple assessment will help you identify your interests and goals, and recommend the path that best fits your responses. You may be surprised and excited by the results!

Pathways materials are available online through Base Camp or offline in print. View the comparison below to help you decide which choice is best for you. It will be available in the following languages: Arabic, French, German, Japanese, Portuguese, Simplified Chinese, Spanish and Traditional Chinese.

**Recommended**

### Base Camp

First path free

Base Camp is your online gateway to Pathways. Embarking on your Pathways journey through Base Camp is recommended because it offers full access to the Pathways learning experience and includes:

- ▶ 10 paths in English and eight other languages\*
- ▶ Customized path recommendation based on your Pathways Assessment results
- ▶ Engaging videos, interactive activities and quizzes
- ▶ A unique evaluation resource for each project that can be completed and stored electronically
- ▶ Opportunity to earn and give digital badges
- ▶ Ability to share feedback online

\*If you plan to work in a path in any language other than English, it is highly recommended that you use Base Camp. This way, you can choose from all 10 paths as opposed to two.

**Take Your Assessment**

### Printed Materials

First path free  
(Plus \$25 materials fee)

Select materials are available in print. Although you will have the resources you need to complete your path, your experience and path options are limited when compared to Base Camp. Choosing printed materials gives only partial access to the Pathways learning experience and includes:

- ▶ Five paths in English
- ▶ Two paths available in eight languages
- ▶ A unique evaluation resource for each project
- ▶ Full-color, professionally bound materials
- ▶ Standard shipping (with applicable fees)

Note: You will not be able to take the Pathways Assessment or have access to your path online.

**Purchase Printed Materials**

**Click**



## TAKE ASSES

The first step in Pathways is to take the assessment to identify the path that best fits your requirements.

Pathways materials are available in English, Traditional Chinese, and Spanish. It will be available in other languages in the future.



### Pathways Assessment

Answer the following questions to identify the path that best meets your personal and professional development goals. Your answers will remain confidential.

English

Your answers will remain completely confidential.

Please keep in mind that if you complete the assessment but do not select a path, you will be required to take the assessment again when you return to place your order.

**Start**

**Click**

Note: Don't over think this assessment. Many questions will leave you thinking, "well, that depends." Don't get hung up on this. Just go with your gut.

## Base Camp

Base Camp is your online Pathways journey through the assessment and path selection process. It offers full access to the following features:

- ▶ 10 paths in English
- ▶ Customized path recommendations
- ▶ Assessment results
- ▶ Engaging videos, in English and Spanish
- ▶ A unique evaluation of your strengths and weaknesses
- ▶ Completed and stored assessment results
- ▶ Opportunity to earn and give digital badges
- ▶ Ability to share feedback online

\*If you plan to work in a path in any language other than English, it is highly recommended that you use Base Camp. This way, you can choose from all 10 paths

- ▶ Standard shipping (with applicable fees)

Note: You will not be able to take the Pathways Assessment if you are not logged in to your account or if you are not on the Pathways Assessment page online.

Welcome to Pa

## E ASSES

Step in Pathways  
best fits your re  
materials are a  
you. It will be av  
Chinese.

## e Camp

camp is your online  
ys journey throug  
ull access to the  
paths in English  
stomized path re  
essment results  
gaging videos, in  
unique evaluation  
mpleted and stor  
portunity to earn  
ility to share fee

can to work in a path

ended that you use Base Camp. This way, you can choose from all 10 paths

0% Complete



Select three topics you are interested in learning about from the list below.

**Click three,  
then Next**

☐ Public Speaking

☐ Coaching

☐ Speech Writing

☐ Project Planning

☐ Leadership

☐ Negotiation

☐ Networking

☐ Change Management

☐ Time Management

☐ Motivating Others

☐ Interpersonal Communication

**Next**

**First pat**  
(Plus \$25 ma

will have the r  
e and path op  
g printed mate  
ng experience

ect

ent or have acco

3% Complete



Which of the following topics is most related to the personal and professional goals that brought you to Toastmasters?

**Click one,  
Then Next**



Project Planning



Negotiation



Interpersonal  
Communication

**Next**

7% Complete



Learning about \_\_\_\_\_ will help me significantly in my personal and/or professional life.

**Click one,  
Then Next**



Project Planning



Negotiation



Interpersonal  
Communication

**Next**

11% Complete



I am flexible enough to adapt to others' communication styles.

**Click one,  
Then Next**



Strongly  
Disagree



Disagree



Unsure



Agree



Strongly  
Agree

**Next**



15% Complete



I feel relaxed while giving a speech.

**Click one,  
Then Next**



Strongly  
Disagree



Disagree



Unsure



Agree



Strongly  
Agree

**Next**

19% Complete



I am not sure what to do with my hands while giving a speech.

**Click one,  
Then Next**



Strongly  
Disagree



Disagree



Unsure



Agree



Strongly  
Agree

Next

## ASSES

Pathways  
ts your re  
ials are a  
will be av  
ese.

## Camp

your online  
ney throug  
ess to the f  
in English  
ed path re  
ent results  
y videos, in  
evaluation  
d and stor

nity to earn and give digital badges

share feedback online

ork in a path in any language other than English, it is highly  
at you use Base Camp. This way, you can choose from all 10 paths

23% Complete



Engaging in a group discussion with new people makes me nervous.

**Click one,  
Then Next**



Strongly  
Disagree



Disagree



Unsure



Agree



Strongly  
Agree

**Next**

s, and recommend the

decide which choice is  
se, Spanish and

**First path free**  
(Plus \$25 materials fee)

will have the resources  
e and path options are  
g printed materials  
ng experience and

ect

► Standard shipping (with applicable fees)

Note: You will not be able to take the Pathways Assessment or have access to your path online.

26% Complete



I seek out leadership opportunities.

**Click one,  
Then Next**



Strongly  
Disagree



Disagree



Unsure



Agree



Strongly  
Agree

**Next**

30% Complete



I adapt my communication behavior to meet others' expectations.

**Click one,  
Then Next**



Strongly  
Disagree



Disagree



Unsure



Agree



Strongly  
Agree

**Next**



SES

34% Complete



I show my understanding of others by reflecting their feelings back to them.

**Click one,  
Then Next**



Strongly  
Disagree



Disagree



Unsure



Agree



Strongly  
Agree

**Next**

38% Complete



I make eye contact with my audience while presenting a speech.

**Click one,  
Then Next**



Strongly  
Disagree



Disagree



Unsure



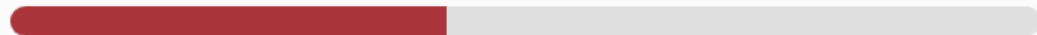
Agree



Strongly  
Agree

**Next**

42% Complete



I show my involvement in conversation both nonverbally and verbally.

**Click one,  
Then Next**



Strongly  
Disagree



Disagree



Unsure



Agree



Strongly  
Agree

Next

46% Complete



Ordinarily, I am very calm and relaxed in conversations.

**Click one,  
Then Next**



Strongly  
Disagree



Disagree



Unsure



Agree



Strongly  
Agree

Next

SES

Pathways  
s your re  
als are a  
ill be av  
se.

amp

our online  
ey throug  
ss to the f  
n English  
ed path re  
nt results  
videos, in  
evaluation  
d and stor

ty to earn and give digital badges

50% Complete



In conversation, I talk about things which are of interest to both myself and the other person.

**Click one,  
Then Next**



Strongly  
Disagree



Disagree



Unsure



Agree



Strongly  
Agree

Next

First  
(Plus \$25)

will have t  
e and path  
g printed n  
ng experie

ect

► Standard shipping (with applicable fees)



SES

pathways  
s your re  
als are at  
ll be av  
se.

amp

our online  
ey throug  
s to the f  
English  
d path re  
nt results  
videos, in  
evaluation  
and stor

ty to earn and give digital badges  
share feedback online

53% Complete



While giving a speech, I get so nervous I forget facts I really know.

**Click one,  
Then Next**



Strongly  
Disagree



Disagree



Unsure



Agree



Strongly  
Agree

Next

► Standard shipping (with applicable fees)

Note: You will not be able to take the Pathways Assessment o

SES

thways  
your re  
s are a  
be av  
.

mp

ur onlin  
y throug  
to the f  
English  
path re  
results  
deos, in  
aluation  
and stor

to earn and give digital badges

are feedback online

57% Complete



Working in a team is a good opportunity for me to understand myself better.

**Click one,  
Then Next**



Strongly  
Disagree



Disagree



Unsure



Agree



Strongly  
Agree

Next

First path  
(Plus \$25 mate

will have the re  
e and path opti  
g printed materi  
ng experience a

ect

► Standard shipping (with applicable fees)

Note: You will not be able to take the Pathways Assessment as have passed

61% Complete



I know how to respond because I am perceptive and attentive to others' behaviors.

**Click one,  
Then Next**



Strongly  
Disagree



Disagree



Unsure



Agree



Strongly  
Agree

**Next**

65% Complete



I am reluctant to adopt new ways of doing things until I see them working for people around me.

**Click one,  
Then Next**



Strongly  
Disagree



Disagree



Unsure



Agree



Strongly  
Agree

Next

ES

69% Complete

I seek out new ways to do things.

Click one,  
Then Next

Strongly  
Disagree

Disagree

Unsure

Agree

Strongly  
Agree

Next

np

online  
throug  
to the f

glish

ath re  
results

es, in  
uation  
d stor

o earn and give digital badges

e feedback online

s, and

ecide  
hinese,

Fir  
(Plus

will ha  
e and p  
g printe  
ng exp

ect

► Standard shipping (with applicable fees)

Note: You will not be able to take the Pathways Assessment or h  
path online.

73% Complete



I use a wide range of behaviors, including self-disclosure and wit, to adapt to others.

**Click one,  
Then Next**



Strongly  
Disagree



Disagree



Unsure



Agree



Strongly  
Agree

Next

76% Complete



Once I set an interpersonal communication goal for myself, I know the steps to take to achieve it.

**Click one,  
Then Next**



Strongly  
Disagree



Disagree



Unsure



Agree



Strongly  
Agree

**Next**

80% Complete



While speaking, I am aware of how others are reacting to what I say.

**Click one,  
Then Next**



Strongly  
Disagree



Disagree



Unsure



Agree



Strongly  
Agree

**Next**



84% Complete



I like to get involved in group discussions.

**Click one,  
Then Next**



Strongly  
Disagree



Disagree



Unsure



Agree



Strongly  
Agree

**Next**

88% Complete



I prefer to be a team member rather than a team leader.

**Click one,  
Then Next**



Strongly  
Disagree



Disagree



Unsure



Agree



Strongly  
Agree

**Next**

92% Complete



I am generally cautious about accepting new ideas.

**Click one,  
Then Next**



Strongly  
Disagree



Disagree



Unsure



Agree



Strongly  
Agree

**Next**

96% Complete



I often initiate conversation with people I don't know well.

**Click one,  
Then Next**



Strongly  
Disagree



Disagree



Unsure



Agree



Strongly  
Agree

Next

## | RECOMMENDED PATHS

When you purchase a path in Pathways, a new shopping cart will be created. Any previous items in your shopping cart will be saved and restored once your Pathways purchase is complete.

Select a Language

English

### Best Match



#### Team Collaboration

This path helps you build your skills as a collaborative leader. You will work through projects that focus on active listening, motivating others and collaborating with a team. Each project contributes to building interpersonal communication and public speaking skills. The Team Collaboration path culminates in a project focused on applying your leadership skills. Not available in non-English printed materials.

Choose this Path



#### Innovative Planning

This path helps you build your skills as a public speaker, leader and manager. Your projects focus on creative solutions and building strong speaking skills. These skills include strong audience connection, speech writing and delivery. Each project contributes to building an understanding of the steps needed to manage a project. The Innovative Planning path culminates in a "High Performance Leadership" project of your design. Not available in printed materials.

Choose this Path



#### Effective Coaching

This path helps you build your skills as a positive communicator, leader and coach. You will work through projects that focus on

Choose this Path

**The system will suggest up to 3 paths it thinks are a good fit, based on your assessment responses. Pick one.**

**If you prefer one of the other 7 paths, scroll down the page a little (see next slide).**

## RECOMMENDED PATHS

When you purchase a path in Pathways, a new shopping cart will be created. Any previous items in your shopping cart will be saved and restored once your Pathways purchase is complete.

Select a Language

English

Best Match



### Innovative Planning

This path helps you build your skills as a public speaker, leader and project manager. Your projects focus on creating innovative solutions and building public speaking skills. These skills include developing strong audience connections, speech writing and delivery. Each project contributes to building an understanding of the steps needed to manage a project. The Innovative Planning path culminates in a "High Performance Leadership" project of your design. Not available in printed materials.

Choose this Path



### Team Collaboration

This path helps you build your skills as a collaborative leader. You will work through projects that focus on active listening, motivating others and collaborating with a team. Each project contributes to building interpersonal communication and public speaking skills. The Team Collaboration path culminates in a project focused on applying your leadership skills. Not available in non-English printed materials.

Choose this Path



### Dynamic Leadership

This path helps you build your skills as a strategic leader and negotiator. You will work through projects that focus on understanding leadership and communication styles, the effect of conflict on a group and the skills needed to defuse and direct conflict. Each project also emphasizes the development of strategies to facilitate change in an organization or group, interpersonal communication and public speaking. The Dynamic Leadership path culminates in a project focused on applying your leadership skills. Not available in non-English printed materials.

Choose this Path

Additional Paths



Click here to show the other 7 paths.

Choose this Path

Choose this Path

Choose this Path

Not available in non-English printed materials.

Additional Paths



### Effective Coaching

This path helps you build your skills as a positive communicator, leader and coach. Not available in printed materials.

Read More

### Leadership Development

This path helps you build your skills as an effective communicator and leader.

Read More

### Motivational Strategies

You cannot purchase this path at this time. This path is currently in progress on your Base Camp transcript.

Read More

### Persuasive Influence

This path helps you build your skills as a persuasive communicator and leader. Not available in printed materials.

Read More

### Presentation Mastery

This path helps you build your skills as an accomplished public speaker.

Read More

### Strategic Relationships

This path helps you build your skills as a leader in communication. Not available in non-English printed materials.

Read More

### Visionary Communication

This path helps you build your skills as a strategic communicator and leader. Not available in printed materials.

Read More

Now you can choose between any of the 10 paths.

**After selecting your path, you'll be asked to confirm your selection. Click Continue to lock in your selection.**

Are you sure you want to select this path?

Please confirm that you would like to proceed with Effective Coaching

Cancel

Continue

**It takes the system several seconds to register your selection. Please wait.**

Are you sure you want to select this path?

Please wait while we process your request. This may take a few minutes

Cancel

Continue ↗



**Congratulations, you are now enrolled.**

**It takes around 30 minutes for the path to be ready for your use.**



## Thank you for enrolling in Toastmasters Pathways

Your journey has officially begun! You will receive a confirmation email shortly and be able to start your path in approximately 30 minutes. If you have any questions, please contact [supplyorders@toastmasters.org](mailto:supplyorders@toastmasters.org) or call +1 949-858-8255, Monday through Friday, 6 a.m. to 7 p.m. PT.

Return to Pathways Start Page

Explore Base Camp

System Requirements

**While waiting, why not explore Base Camp?**



supplyorders@toastmasters.org

to william ▾

You will also get a  
confirmation via email.



## WHERE LEADERS ARE MADE

Order Confirmation: 9008160143

Thank you for ordering from Toastmasters International! A summary of your purchase is shown below.

Please note that printed materials will not be shipped for the online path(s) you purchased. Go to the [Pathways Start page](#) now to access and explore Base Camp, and to begin your path.

Questions or concerns about your order? Please email [supplyorders@toastmasters.org](mailto:supplyorders@toastmasters.org) or call 720-439-5050. We're happy to assist you Monday through Friday, 6 a.m. to 7 p.m. PT.

### Billing Address

11111 Corner [Base Camp Road](#) Enfield,  
Connecticut 06022

### Shipping Address

11111 Corner [Base Camp Road](#) Enfield,  
Connecticut 06022

### Shipping Method:

#### Payment Information

Credit Card Type:

Credit Card Number: XXXXXXXXXXXXX

Name on Card:

Expiration Date:

Item No	Description	Quantity	Amount
8708	Effective Coaching	1	\$0.00

Sub-total:	\$0.00
Shipping & Handling:	\$0.00
Tax:	\$0.00
Order Total:	\$0.00
Total Savings:	\$20.00



WHERE LEADERS ARE MADE

Welcome, William



Logout

Find a Club

Start a Club

Contact Us

Search



FIND A CLUB

Days

Education

Membership

Leadership Central

Resources

Magazine

Events

Shop

Once your path is ready,  
login to access it.

## PATHWAYS LEARNING EXPERIENCE

Welcome to Pathways. We challenge and inspired to reach new heights both personally and professionally.

### Choose your path

What are your goals and how will you achieve them? Take the Pathways Assessment to identify the path that aligns with your interests and objectives.



Continue to Path Selection

### Access my path through Base Camp

Access your path here through Base Camp, your online gateway to Pathways. Base Camp tracks your progress and lets you connect online with other members of your club.

Your home club:  
Speech Weavers



Log in as a Member

### The Navigator

View *The Navigator* to guide you through each step of your journey. Refer to it to support your progress and to answer your questions along the way.

Select Language:

English



NAVIGATOR

Launch *The Navigator*

## Choose your path

What are your goals and how will you achieve them? Take the Pathways Assessment to identify the path that best aligns with your interests and objectives.



Continue to Path Selection

## ASSESSMENT AND CHOOSE YOUR PATH

Step in Pathways is to take an assessment. This simple assessment fits your responses. You may be surprised and excited.

Materials are available online through Base Camp or offline. It will be available in the following languages: Arabic, French, German, Japanese, Portuguese, Simplified Chinese, Spanish and Chinese.

Recommended

Base Camp

\$20

Base Camp is your online gateway to Pathways. Embarking on your Pathways journey through Base Camp is recommended because it offers full access to the Pathways learning experience and includes:

- ▶ 10 paths in English and eight other languages\*
- ▶ Customized path recommendation based on your Pathways Assessment results
- ▶ Engaging videos, interactive activities and quizzes
- ▶ A unique evaluation resource for each project that can be completed and stored electronically
- ▶ Opportunity to earn and give digital badges
- ▶ Ability to share feedback online

\*If you plan to work in a path in any language other than English, it is highly recommended that you use Base Camp. This way, you can choose from all 10 paths as opposed to two.

Take Your Assessment

If you are not sure if you have picked a path, you can go back to Choose Your Path and check.

If you see this, you have already selected your path

Printed Materials

\$45

(Plus \$25 materials fee)

Printed materials are available in print. Although you will have the resources you need to complete your path, your experience and path options are limited when compared to Base Camp. Choosing printed materials offers only part of the Pathways learning experience and includes:

- ▶ Financial Literacy
- ▶ Team Collaboration
- ▶ Assessment
- ▶ Feedback
- ▶ Strategic Thinking

Note: You can purchase printed materials for your path online.

Purchase Printed Materials

If you see this, you have already selected your path. You can buy another path any time you want for \$20.

# Questions

Heather Turner, DTM, [forfengdesigns@gmail.com](mailto:forfengdesigns@gmail.com)

Norm Thibodeau, DTM, [Normand.Thibodeau@LFG.com](mailto:Normand.Thibodeau@LFG.com)